

# Iran (Islamic Republic of)

## COUNTRY GENERAL INFORMATION (WHO, 2015)

Total population:	79,109,000
Gender F / M (%):	49.7 / 50.3
Population, age group <15/≥15 years (%):	24 / 76
Life expectancy at birth (F/M, years) (2015):	78 / 73
GDP (PPP int \$):	15,600
Income status:	Upper middle
Number of 3 <sup>rd</sup> sub-national administrative level divisions, name:	999, District

## EPIDEMIOLOGY

	VL	CL <sup>b</sup>	PKDL	MCL
Endemicity status:	Endemic	Endemic	Non endemic	Non endemic
Number of new cases (incidence):	No data	No data	N/A	N/A
Number of relapses <sup>1</sup> :	No data	No data	N/A	N/A
<b>Total number of cases:</b>	<b>72</b>	<b>22,041</b>	<b>No data</b>	<b>No data</b>
Imported cases (#, %):	No data	No data	N/A	N/A
Gender distribution (% F):	No data	No data	N/A	N/A
Age group distribution (% < 5/5-14/>14):	No data	No data	N/A	N/A
Incidence rate (cases/10,000 population in endemic areas <sup>2</sup> ):	No data	No data	N/A	N/A
Number of endemic 3 <sup>rd</sup> sub-national administrative level divisions:	30	No data	N/A	N/A
Population at risk <sup>2</sup> (% # at risk/total population):	No data	No data	N/A	N/A
Was there any outbreak?	No data	No data	N/A	N/A
Number of new <sup>3</sup> foci:	No data	No data	N/A	N/A

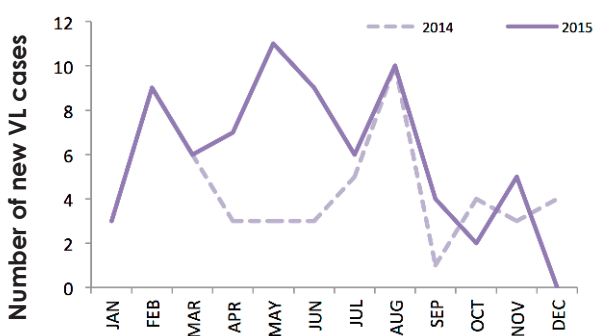
N/A = Not applicable; <sup>1</sup> Relapse in this country is defined as: "Case with symptoms reappearing 6 month after completing treatment"; <sup>2</sup> Defined as "Number of people living in 3<sup>rd</sup> sub-national administrative level endemic areas", as for Shirzadi et al., 2015; <sup>3</sup> Defined as "In this reporting period, an area at the 3<sup>rd</sup> sub-national administrative level reporting cases for the first time ever"; <sup>4</sup> The denominator is the population at risk as defined by Shirzadi et al., 2015. <sup>b</sup> In Iran, both ACL (anthroponotic cutaneous leishmaniasis) and ZCL (zoonotic cutaneous leishmaniasis) are endemic, but information was only available as aggregate CL.

## Monthly distribution of new cases (January-December)

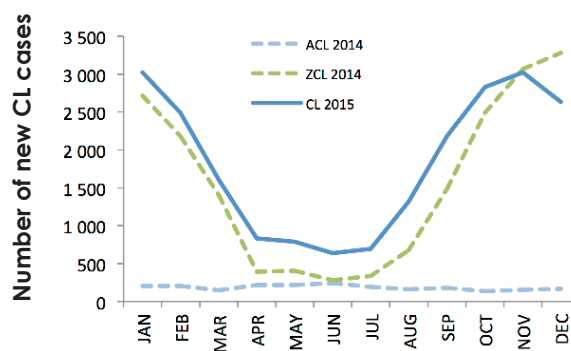
2015	JAN	FEB	MAR	APR	MAY	JUN	JUL	AUG	SEP	OCT	NOV	DEC
VL	3	9	6	7	11	9	6	10	4	2	5	0
CL	3,025	2,487	1,606	832	787	635	692	1,315	2,180	2,826	3,024	2,632

VL = visceral leishmaniasis; CL = cutaneous leishmaniasis; PKDL = post-kala-azar dermal leishmaniasis; MCL = mucocutaneous leishmaniasis

### Visceral leishmaniasis

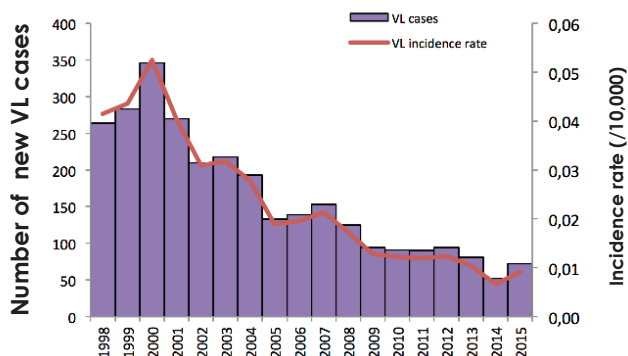


### Cutaneous leishmaniasis

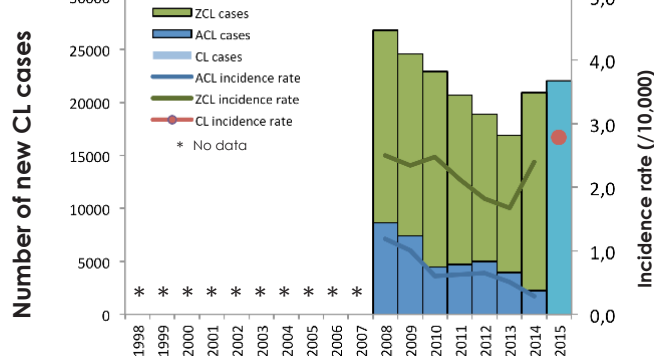


## Incidence rate/10,000 (at the national level) and number of new cases from 1998 to 2015

### Visceral leishmaniasis



### Cutaneous leishmaniasis



## Disease distribution of new VL and CL cases

No data under national level

### CONTROL AND SURVEILLANCE

Year Leishmaniasis National Control Programme (LNCP) was established:	2007
Type of surveillance:	Integrated
Is there a vector control programme?	Yes
Type of insecticide used for Indoor residual Spraying (IRS):	Deltamethrin
Year latest national guidelines:	2007
Is leishmaniasis notifiable (mandatory report)?	Yes
Is there a reservoir host control programme?	Yes
Number of leishmaniasis health facilities:	1,002

### DIAGNOSIS

	VL	CL	PKDL	MCL
Number of people screened actively for:	No data	No data	N/A	N/A
Number of people screened passively for:	No data	No data	N/A	N/A
Cases diagnosed by RDT (% , # RDT+ / total VL cases):	No data	N/A	N/A	N/A
Proportion of positive RDT (% , # RDT+ / total RDT):	No data	N/A	N/A	N/A
Cases diagnosed by direct exam* (parasitology) (% , # slides + / total cases):	No data	No data	N/A	N/A
Proportion of positive slides (% , # slides + / total slides):	No data	No data	N/A	N/A
Cases diagnosed clinically (% , # clinical cases / total cases):	No data	No data	N/A	N/A
Proportion of CL cases with lesions equal to or greater than 4 cm:	N/A	No data	N/A	N/A
Proportion of CL cases with 4 or more lesions (% , # CL cases / total CL cases):	N/A	No data	N/A	N/A
Percentage of cases with HIV coinfection:	No data	N/A	N/A	N/A

N/A = Not applicable; RDT = rapid diagnostic test; HIV = human immunodeficiency virus

### TREATMENT AND MEDICINES

- ▶ Is treatment provided for free in the public sector? **Yes**
- ▶ Antileishmanial medicines included in the National Medicine List: **Meglumine antimoniate, Miltefosine**

#### TREATMENT OUTCOME

	VL	CL
Proportion of cases treated (% , # treated cases / total cases):	No data	No data
Initial cure rate(% , # cases initially cured / total cases):	No data	No data
Failure rate <sup>4</sup> (% , # patients with treatment failure / total cases):	No data	No data
Case fatality rate (% , # patients who died / total cases):	No data	No data

VL = visceral leishmaniasis; CL = cutaneous leishmaniasis; PKDL= post-kala-azar dermal leishmaniasis; MCL = mucocutaneous leishmaniasis

<sup>4</sup> Failure in this country is defined as: "Case with no clinical cure or reappearance of symptoms within 2 weeks after completing treatment"